

Customer :

customer

Customer part :

customer part

Comment :

Comment

S1=1.61

S2=2.16

Tmax=457

Tp S2=496.0

PI=0.43

HI=114

Sample =1658.60

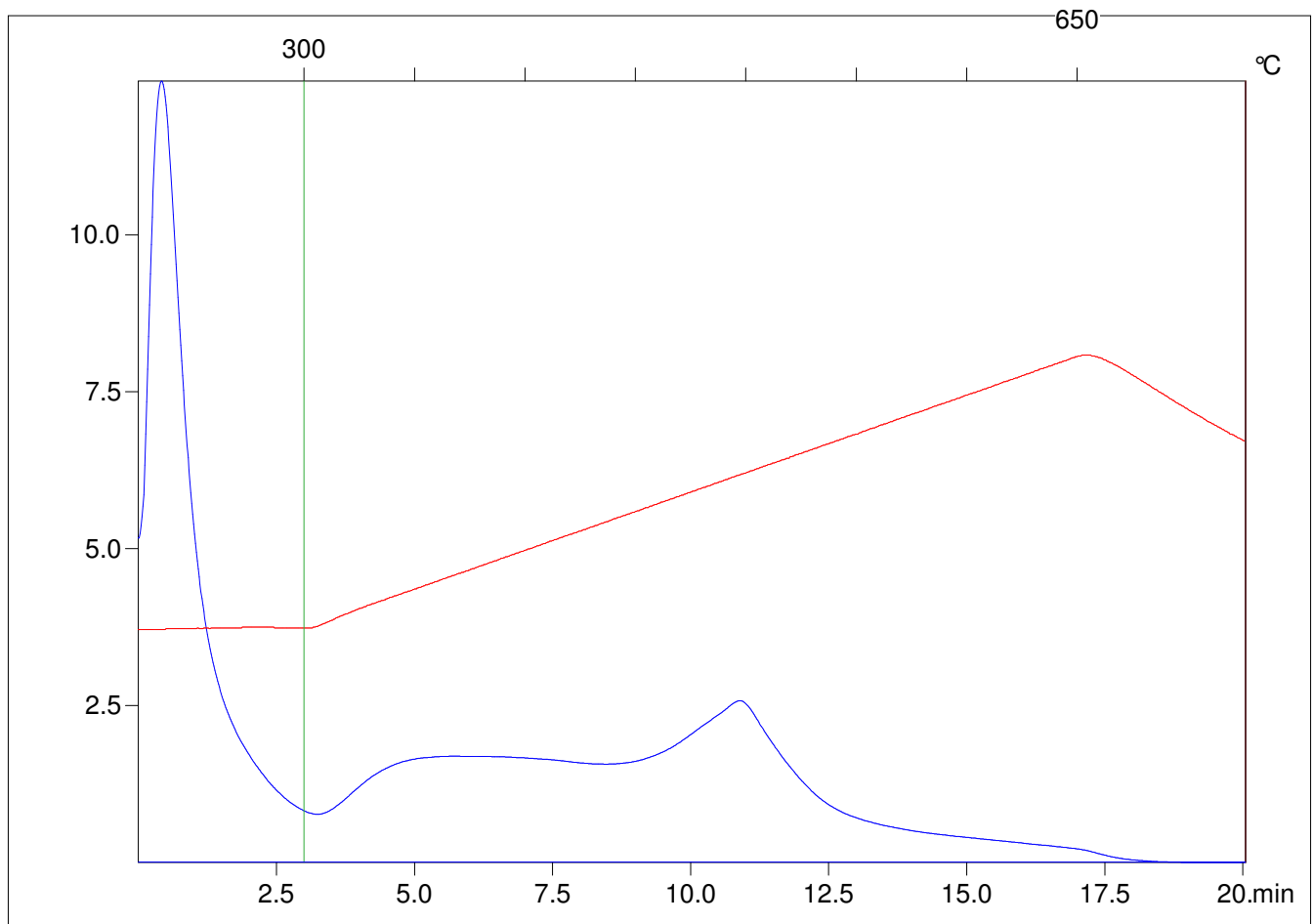
Method =Bulk Rock

Cycle=Basic

KFID(10\*9)=1444

Qty =70.9

TOC=1.9



C:\VINC\PK1792\PK085.R00 : FID pyrolysis graphic

State

Pyro Status

Oxi Status